



Newsletter

Summer 1 – Week 4

Week beginning – 08/05/2023



Library Visits Next Week

There will be no library visits for the next couple of weeks due to events happening in school. Please see future visit dates for the Summer Term.



	Morning	Afternoon
4/5/23	F2	
11/5/23	NONE DUE TO KS2 SATS	
18/5/23	NONE DUE TO KS1 SATS	
25/5/23	NONE DUE TO KS1 SATS	4AR
Half Term		
8/6/23	3JB and 3NW	4AW
15/6/23	2EB and 2RV	
22/6/23	F1	
29/6/23	1HO	5GS
6/7/23	1RW	5DG
13/7/23	3JB and 3NW	4AR

Mentions:

A special mention to our Year 6 children this week. A huge well done for all your hard work in your SATs. Good luck to Year 2 for next week.

Attendance:

Whole School attendance: 95.03%

Winning Classes: 1HO – 96.55%
6IR - 100%

Time 2 Chat:

For this weeks time to talk we would like you to use your imagination. We would like you to imagine you were out for a walk and came across the cave below. What do you think may be in the cave? Where do you think the cave may lead to? Do you think anything lives in there? Does it remind you of a story you have read? Can you create your own adventure story thinking about what you might see and do?



Sign of the week:

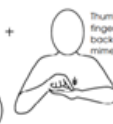


Flutter hands and move them slightly upwards

Butterfly



Finger spell B



Thumb and index finger jab twice into back of hand to mime being stung

Bee



Butterfly

<https://twitter.com/makatonlucinda/status/1152457022>

Bee

991929344?lang=en-gb

<https://www.youtube.com/watch?v=M25gSvSZcvk>

Diary Dates

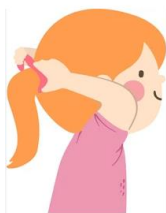
Monday 15th May	Y4 Trip to Cadbury's World - Cancelled
Friday 19th May	INSET Day
Monday 22nd May - Thursday 25th May	Y4 & Y5 Bamburgh residential
Wednesday 7th June	2EB Trip to Pizza Express
Wednesday 14th June	Glee/Choir Trip to see Annie
Wednesday 14th June	Y6 Trip to Holocaust Centre
Friday 16th June	Y3 Trip to Pleasley Pit
Wednesday 28th June - Friday 30th June	Y6 Walesby residential
Wednesday 5th July	2RV Trip to Pizza Express



This Week's Golden Table Children



There was no Golden Table this week due to it being Year 6 SATS week. Please keep a look at [here](#) for future Golden Table names.



There have been a few cases of head lice in school recently. If your child has long hair, it may helpful to tie it back whilst in school. Thank you!



Term Dates:

Please see below for the Nottinghamshire County Council School holiday dates for 2022/23.

Half Term – 29/05/2023 – 02/06/2023.

Last day of Summer Term – 21/07/2023.

Inset Days

Friday 19th May

Monday 24th July

Tuesday 25th July

Class Emails:

Nursery (Miss Taylor/Mrs Dixon)	HPF1@holgateprimary.org
F2SB (Mrs Bacon)	F2SB@holgateprimary.org
F2WS (Mr Smith)	F2WS@holgateprimary.org
1HO (Mrs O'Kane)	1HO@holgateprimary.org
1RW (Mrs Mcllwaine)	1RW@holgateprimary.org
2EB (Miss Baker)	2EB@holgateprimary.org
2RV (Miss Wragg)	2RV@holgateprimary.org
3JB (Mrs Bardgett)	3JB@holgateprimary.org
3NW (Mrs Wilkinson)	3NW@holgateprimary.org
4AR (Mr Rathe)	4AR@holgateprimary.org
4AW (Miss Wood)	4AW@holgateprimary.org
5DG (Mr Gleave)	5DG@holgateprimary.org
5GS (Mr Smith)	5GS@holgateprimary.org
6AW (Mrs Woodhead)	6AW@holgateprimary.org
6IR (Miss Roe)	6IR@holgateprimary.org

After school clubs



Day	Club	Year Group
Tuesday	Craft Club	F2
	Choir	Y1 - Y6
Wednesday	Karate	Y1 - Y6
	Dough Club	Y1 - Y5
	Summer Sports	Y3 - Y6
	Pen Pal	Y4 - Y6
Thursday	Glee Club	Y1 - Y6
Friday	Football	Y3 - Y6



Primary and Nursery School

EYFS

In **nursery** this week we have been looking at the number 4. We have worked in groups to practice writing the number and made groups of 4 together. We made towers of 4 using the bricks and enjoyed counting them using our knowledge of 1-1 counting. We have lots of things in our nursery environment to help us with our learning and enjoy playing together to count them.



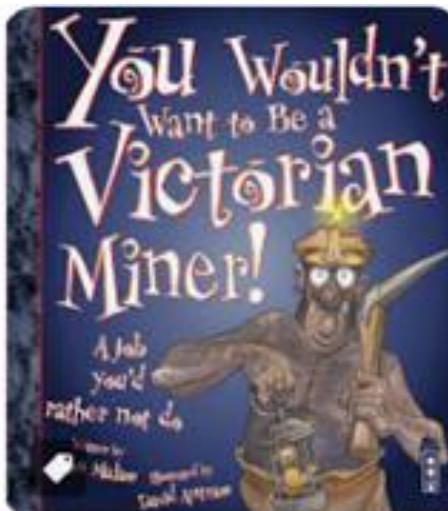
KS1 (Years 1 and 2)

Year 2's 'lets get growing' vehicle is in full swing. We have planted our peas into the allotment in school along with carrots and potatoes outside Year 2. We are looking forward to seeing them grow over the next few weeks!!



KS2 (Years 3 and 4)

Y3 reading this week has been centred around the text You wouldn't want to be a Victorian Miner. The children have loved reading and discovering what it would have been like to be a child working down the mines. There were so many roles, so many dangerous situations and so many risks. We decided life in 2023 was SOOOOOOOOOOOOOO much better!!!



KS2 (Years 5 and 6)

After their hard working SATs morning, the children in **Year 6** have enjoyed some 'down time' baking biscuits. Apologies to parents and carers for flour covered uniforms. They really enjoyed themselves.



Monsters Phonics

These are the phonemes that each class in Early Years and Key Stage 1 have been focusing on this week.



In F2, we have been learning about CCVC words
For example: champ, stomp and blast

In Year 1, our phonemes for this week are...

er (as in her and mixer)

ir (as girl and swirl)

ur (as churn and burning)

oo (as food and pool)



In Year 2 this week we are learning...

w-or (as in worm and world)



You can help your child with their phonics at home by reading and writing words containing this phoneme.

Don't forget to read as often as you can and record this in your child's reading diary too!

Nursery Rhymes at Holgate

In EYFS and Key Stage 1, the children will be having a weekly nursery rhyme focus.

This will be practised in each class throughout the week as well as during assemblies.

Every Friday, this will be put on the newsletter in preparation for the upcoming week. This will give you chance to engage with the nursery rhyme with your child at home too.

The nursery rhyme for the upcoming week is ...



Nottinghamshire School Holidays 2022-23



September 2022 to July 2023

September 2022

M	T	W	T	F	S	S
29	30	31	1	2	3	4
5	6	7	8	9	10	11
12	13	14	15	16	17	18
19	20	21	22	23	24	25
26	27	28	29	30		

October 2022

M	T	W	T	F	S	S
3	4	5	6	7	8	9
10	11	12	13	14	15	16
17	18	19	20	21	22	23
24	25	26	27	28	29	30
31						

November 2022

M	T	W	T	F	S	S
7	8	9	10	11	12	13
14	15	16	17	18	19	20
21	22	23	24	25	26	27
28	29	30				

December 2022

M	T	W	T	F	S	S
5	6	7	8	9	10	11
12	13	14	15	16	17	18
19	20	21	22	23	24	25
26	27	28	29	30	31	

January 2023

M	T	W	T	F	S	S
2	3	4	5	6	7	8
9	10	11	12	13	14	15
16	17	18	19	20	21	22
23	24	25	26	27	28	29
30	31					

February 2023

M	T	W	T	F	S	S
6	7	8	9	10	11	12
13	14	15	16	17	18	19
20	21	22	23	24	25	26
27	28					

March 2023

M	T	W	T	F	S	S
6	7	8	9	10	11	12
13	14	15	16	17	18	19
20	21	22	23	24	25	26
27	28	29	30	31		

April 2023

M	T	W	T	F	S	S
3	4	5	6	7	8	9
10	11	12	13	14	15	16
17	18	19	20	21	22	23
24	25	26	27	28	29	30

May 2023

M	T	W	T	F	S	S
1	2	3	4	5	6	7
8	9	10	11	12	13	14
15	16	17	18	19	20	21
22	23	24	25	26	27	28
29	30	31				

June 2023

M	T	W	T	F	S	S
5	6	7	8	9	10	11
12	13	14	15	16	17	18
19	20	21	22	23	24	25
26	27	28	29	30		

July 2023

M	T	W	T	F	S	S
3	4	5	6	7	8	9
10	11	12	13	14	15	16
17	18	19	20	21	22	23
24	25	26	27	28	29	30
31						

August 2023

M	T	W	T	F	S	S
7	8	9	10	11	12	13
14	15	16	17	18	19	20
21	22	23	24	25	26	27
28	29	30	31			

 School Holidays

 Public Holidays

 Administration Day

Autumn Term

Schools Open - morning Wednesday 31 August 2022
Half Term - Monday 17 October 2022 - Friday 28 October
Schools close - evening Wednesday 21 December 2022

Spring Term

Summer Term

Schools Open - morning Tuesday 17 April 2023
May Day Bank Holiday - Monday 1 May 2023
King's Coronation Bank Holiday - Monday 8 May 2023
Half Term - Monday 29 May 2023 - Friday 2 June 2023
Schools Close - evening Tuesday 25 July 2023