



Newsletter

Summer 1 – Week 6

Week beginning – 22/05/2023



Library Visits Next Week

Library visits will continue after the half term break. Visit dates for first week back are:

3JB, 3NW on **Thursday 8th June** in the morning.

4AW on **Thursday 8th June** in the afternoon.

If your child has a library card, they are welcome to bring this on the day to withdraw books.



Diary Dates

Wednesday 7th June	2EB Trip to Pizza Express
Wednesday 14th June	Glee/Choir Trip to see Annie
Wednesday 14th June	Y6 Trip to Holocaust Centre
Thursday 15th June	Y3 Trip to Pleasley Pit
Wednesday 28th June - Friday 30th June	Y6 Walesby residential
Wednesday 5th July	2RV Trip to Pizza Express

Mentions:

Nursery: Aksel M, Jacob W.

Reception: Riley-Paul B, Jessica L,

Year 1: Tayla-Grace M, Kye P, Colt W, Lacey B.

Year 2: Layla S, Isabelle C, Oliver J, Ada E.

Year 3: Sonny F, Riley KW, Harper L, Sophie E.

Year 4: Henry B, Brenden O, Chantelle D, Lucy C.

Year 5: Lexie C, Oliver L, Ava H, Renesmae W.

Year 6: Karam S, Lola C, Blase H, Inayah F.

Attendance:

**Whole
School
attendance: 93.6 %**

**Winning
Classes:** 1RW – 97.5 %
3JB – 98.18 %

Time 2 Chat:

Over the last couple of days we have had some beautiful sunshine reminding us of what Summer is. For this week's time to talk we would like you when you are out and about to talk about Summer. Maybe you could ask some of the questions below.

When does Summer start?

How do we know it is Summer?

What would we expect to see?

What clothes do we normally wear?

What is the weather often like?

What activities do we like to do in Summer?

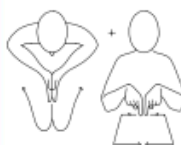
Where do we like to go?

What would your dream Summer day be?

Happy talking 😊



Sign of the week:



Swimming Pool



Swimming



Baby Shark



<https://www.youtube.com/watch?v=4ivLVam5V38>

<https://www.youtube.com/watch?v=sB-NWvoDqWg>

<https://singinghands.co.uk/makaton-signed-songs/baby-shark-makaton-signed-song/>



Fundraising FASHION SHOW & SHOPPING EVENT

YOUR FAVOURITE
HIGH STREET BRANDS
AT UP TO 75% OFF

PLUS FRENCH + ITALIAN DESIGNER WEAR

SIZES
6 TO 30

FRIDAY 23RD JUNE 2023

6PM TO 9PM

Tickets £5.00
each
(£8.00 BYOB)

Adults only

Holgate Primary & Nursery School
High Leys Road
Hucknall. NG15 6EZ

£8.00 tickets include a mandatory corkage fee if
you want to bring your own alcohol.

Ticket line 0115 9638649 cash or card

DEBIT & CREDIT CARDS ACCEPTED

SOS Charity
Fashion Shows

CHARITYFASHIONSHOWS.CO.UK

This Week's Golden Table Children



Year 3	3JB Jedidiah A, Darcie-Rae R	3NW Shakita B, Anastasia B
Year 4	4AW Archie R, Brenden O	4AR Freddie J, Ethan O
Year 5	5DG Kyle W, Lawson D	5GS
Year 6	6AW Ra'mel A, Haydn R	6IR Leo L, James P



Have a wonderful half term, enjoy the sunshine and we will see children back in school on Monday 5th June 😊

Term Dates:

Please see below for the Nottinghamshire County Council School holiday dates for 2022/23.

Half Term – 29/05/2023 – 02/06/2023.

Last day of Summer Term – 21/07/2023.

Return to school 05/08/2023.

Inset Days

Monday 24th July

Tuesday 25th July

Class Emails:

Nursery (Miss Taylor/Mrs Dixon)	HPF1@holgateprimary.org
F2SB (Mrs Bacon)	F2SB@holgateprimary.org
F2WS (Mr Smith)	F2WS@holgateprimary.org
1HO (Mrs O'Kane)	1HO@holgateprimary.org
1RW (Mrs McIlwaine)	1RW@holgateprimary.org
2EB (Miss Baker)	2EB@holgateprimary.org
2RV (Miss Wragg)	2RV@holgateprimary.org
3JB (Mrs Bardgett)	3JB@holgateprimary.org
3NW (Mrs Wilkinson)	3NW@holgateprimary.org
4AR (Mr Rathe)	4AR@holgateprimary.org
4AW (Miss Wood)	4AW@holgateprimary.org
5DG (Mr Gleave)	5DG@holgateprimary.org
5GS (Mr Smith)	5GS@holgateprimary.org
6AW (Mrs Woodhead)	6AW@holgateprimary.org
6IR (Miss Roe)	6IR@holgateprimary.org

After school clubs

Here are our clubs for the Summer 2 term which begin after half term. You can sign up to these on ParentMail.

Day	Club	Year Group
Monday	Football	Y3 - Y6
Monday	Athletics	Y3 - Y6
Monday	Pen Pal	Y4 - Y6
Tuesday	Choir	Y1 - Y6
Wednesday	Dough Club	Y1 - Y6
Wednesday	Football	F2
Wednesday	Karate	Y1 - Y6
Thursday	Glee	Y1 - Y6
Friday	Multi-Sports	Y3 - Y6



EYFS

What a lovely end to our vehicle, changing and growing in **F2**. The children celebrated all of their learning during our vehicle with a special forest school sessions with our parents. We shared some wonderful activities with our grown ups and children including woodwork skills, colouring and decorating butterflies, making clay stick insects and going on a bug hunt. The children were amazing and have enjoyed learning how different things grow and change over time. The children then helped Mrs Bacon to release the butterflies into the newly created butterfly garden in our forest school area. It has been lovely to see how engaged the children have been sharing all of their new knowledge with their friends and parents about flowers and minibeast that they have been learning about.



KS1 (Years 1 and 2)

Year 1 enjoyed their walk to church on Tuesday this week, in the sunshine. They learned the difference between Christianity and Judaism and also learned about weddings. A big thank you to the parents/carers who supported with this.

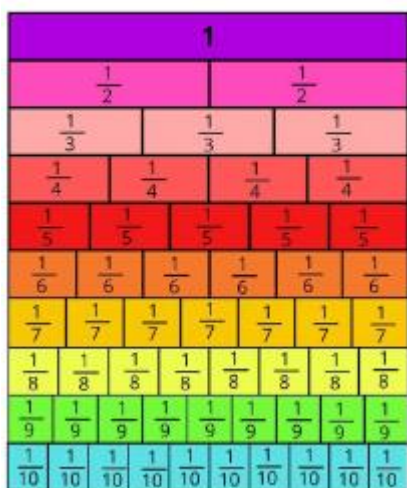


KS2 (Years 3 and 4)

Y3 - Our work in maths on fractions has been quite tricky this week. Finding an equivalent fraction was much easier with the fraction wall. Here is a short clip to help support your child with this concept.

<https://www.youtube.com/watch?v=W72eW83rrC8>

Fractions Wall



KS2 (Years 5 and 6)

It's been a strange week in **Year 5**. We've had about half of our children in school and half on a very exciting residential trip to Bamburgh! The children in school have been phenomenal and the whole Year 5 team have been impressed with how hard they've continued to work even when some of their friends have not been in school. This week, we have done our final written outcome of the term and we wrote a balanced argument for who had the better warriors, Athens or Sparta? We've also completed lots of science learning this week, including learning about day and night and designing a lunchbox to help keep food cold after learning about thermal insulators and conductors. The Year 5 team would like to wish all children a happy and safe half-term and we look forward to seeing them again on Monday the 5th of June.

On Monday, half of **Year 6** went to Holgate Academy to make Viking oat cakes. This is part of their transition sessions to become familiar with the school for September. They had a lovely time, mixing, kneading dough, cutting out and baking using the Food Technology room and meeting some Academy staff.



Moonster Phonics

These are the phonemes that each class in Early Years and Key Stage 1 have been focusing on this week.



In F2, we have been learning about CCVCC words
For example: tramp, plops and blobs

In Year 1, our phonemes for this week are...

ow (as in snow and throw)

ue (as in glue and true)

ue (as in due and cue)

ew (as in chew and stew)

ew (as in few and dew)



In Year 2 this week we are learning...

w-ar (as in warm and wardrobe)



You can help your child with their phonics at home by reading and writing words containing this phoneme.

Don't forget to read as often as you can and record this in your child's reading diary too!

Nursery Rhymes at Holgate

In EYFS and Key Stage 1, the children will be having a weekly nursery rhyme focus.

This will be practised in each class throughout the week as well as during assemblies.

Every Friday, this will be put on the newsletter in preparation for the upcoming week. This will give you chance to engage with the nursery rhyme with your child at home too.

The nursery rhyme for the upcoming week is ...



Nottinghamshire School Holidays 2022-23



September 2022 to July 2023

September 2022

M	T	W	T	F	S	S
29	30	31	1	2	3	4
5	6	7	8	9	10	11
12	13	14	15	16	17	18
19	20	21	22	23	24	25
26	27	28	29	30		

October 2022

M	T	W	T	F	S	S
3	4	5	6	7	8	9
10	11	12	13	14	15	16
17	18	19	20	21	22	23
24	25	26	27	28	29	30
31						

November 2022

M	T	W	T	F	S	S
7	8	9	10	11	12	13
14	15	16	17	18	19	20
21	22	23	24	25	26	27
28	29	30				

December 2022

M	T	W	T	F	S	S
5	6	7	8	9	10	11
12	13	14	15	16	17	18
19	20	21	22	23	24	25
26	27	28	29	30	31	

January 2023

M	T	W	T	F	S	S
2	3	4	5	6	7	8
9	10	11	12	13	14	15
16	17	18	19	20	21	22
23	24	25	26	27	28	29
30	31					

February 2023

M	T	W	T	F	S	S
6	7	8	9	10	11	12
13	14	15	16	17	18	19
20	21	22	23	24	25	26
27	28					

March 2023

M	T	W	T	F	S	S
6	7	8	9	10	11	12
13	14	15	16	17	18	19
20	21	22	23	24	25	26
27	28	29	30	31		

April 2023

M	T	W	T	F	S	S
3	4	5	6	7	8	9
10	11	12	13	14	15	16
17	18	19	20	21	22	23
24	25	26	27	28	29	30

May 2023

M	T	W	T	F	S	S
1	2	3	4	5	6	7
8	9	10	11	12	13	14
15	16	17	18	19	20	21
22	23	24	25	26	27	28
29	30	31				

June 2023

M	T	W	T	F	S	S
5	6	7	8	9	10	11
12	13	14	15	16	17	18
19	20	21	22	23	24	25
26	27	28	29	30		

July 2023

M	T	W	T	F	S	S
3	4	5	6	7	8	9
10	11	12	13	14	15	16
17	18	19	20	21	22	23
24	25	26	27	28	29	30
31						

August 2023

M	T	W	T	F	S	S
7	8	9	10	11	12	13
14	15	16	17	18	19	20
21	22	23	24	25	26	27
28	29	30	31			



School Holidays



Public Holidays



Administration Day

Autumn Term

Schools Open - morning Wednesday 31 August 2022

Half Term - Monday 17 October 2022 - Friday 28 October

Schools close - evening Wednesday 21 December 2022

Spring Term

Summer Term

Schools Open - morning Tuesday 17 April 2023

May Day Bank Holiday - Monday 1 May 2023

King's Coronation Bank Holiday - Monday 8 May 2023

Half Term - Monday 29 May 2023 - Friday 2 June 2023

Schools Close - evening Tuesday 25 July 2023